

DINING TABLES



CENTER of the WORLD
WOOD SHOP
SHOWROOM

2024

Center of the World Woodshop, 4102 Hanover Road, Three Oaks, MI 49128
Open Tuesday & Wednesday or by appointment • 269-469-5687 • www.centeroftheworld.net

MADE BY HAND, LOCALLY

Choose your wood & stain

Our tables are available in a variety of domestic hardwoods: cherry, maple, walnut, quarter-sawn white oak, red oak, and hickory. Rustic, “character” and “wormy” options are also available. We offer a full range of stain colors. Visit our website for an interactive stain chart.

Choose your size

All of our tables are available in multiple sizes, and most can accept leaves. Many can “self-store” leaves under the top. See price lists in this catalog for information about available sizes and the number of leaves a particular table style can accept and/or self-store.

User-friendly finish

Our tables are finished with a conversion varnish that is water- and stain-resistant, and requires no polishing or waxing. You do, however, need to protect it from scratches and heat. On request, we also offer oil, wax, paint, and lacquer finishes. To clean, simply wipe with a soft cloth, dry or damp, in the direction of the grain.

Our guarantee

Our furniture is designed and crafted to last for generations. We are confident in the quality of our wood products. Therefore, our warranty covers defects in workmanship and materials for two years. If a defect is found during that period, we will determine whether to repair or replace the item. If repair is deemed the best solution, Center of the World will determine whether the piece should be returned to our shop or another for repairs. Wood is a natural product that reacts to changes in humidity by expanding or contracting. If the environment is not controlled, seasonal gapping or minor checks can occur, and should be appreciated as a natural characteristic of solid wood. Indoor humidity levels in the range of 35-45% will minimize this. If furniture develops deep cracks, and humidity in the home is controlled, the item will be repaired at no cost. Customers should inspect furniture upon receipt and refuse delivery if a defect is discovered. If a defect is discovered later in the warranty period, the customer should return the piece for repair or replacement. Upon completion of the repair, Center of the World will return the item, at no expense to the customer.

Our commitment to the environment

We use sustainably harvested, local hardwoods, which have been endorsed by the USDA as a preferred green building material. Every year, we give away enough hardwood saplings to replace all of the wood used in our shop. We have been certified as a Green America Approved Business.

Our commitment to the community

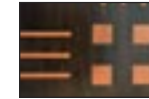
Center of the World Woodshop has an active role in the community — we sponsor, support and organize numerous fund-raising events to support New Troy's Community Center, providing hundreds of staff hours and leadership every year since its inception.

Personalize your table with inlays

An inlay can make your table a true one-of-a-kind piece. Choose from one of our existing patterns, or let us design one for you.



Aztec



4-Square



Arrow



L-Border

Don't see what you want?

Let us design a table for you.

Terry Hanover has been designing custom furniture since 1976. Contact us to arrange an appointment (in person or by phone) to discuss your ideas and needs with him. Within a few days, you'll receive a design and quote. A shop drawing (provided after we receive your deposit) gives you an opportunity to approve all of the details before your table goes into production.

Design fee \$75, payable in advance

Ready to place an order?

A 50% deposit will get us started on your table, with the balance due on completion. Our turnaround is about 12 weeks, not including delivery.

Blanket-Wrapped* Shipping

We personally deliver to locations within a 100-mile radius of our southwest Michigan shop. For most other destinations within the continental United States, we contract with Ukay Furniture Delivery. Ukay trucks pass through our region every 2-3 weeks; time to delivery is 2-5 weeks (Montana, Wyoming, N. & S. Dakota, Nebraska, and Iowa are serviced less frequently). Delivery fees are determined by Ukay based on distance, value, and size of the shipment. When Ukay handles a delivery, our customers pay exactly what Ukay charges us. We do not profit from deliveries.

*Deliveries to Hawaii or Alaska must be crated.

Questions?

Contact us: 269-469-5687 or info@centeroftheworld.net

WOODS & STAINS

We use hardwoods that are sustainably harvested in our region of the country. Domestic hardwoods have been endorsed by the USDA as a preferred green building material, due to responsible harvesting methods practiced by the American hardwood industry, as well as minimal transportation requirements, particularly compared to imported woods.

Even though these are all considered hardwoods, they have a wide range of characteristics based on:

- **Hardness** — Woods are ranked according to their Janka Hardness Rating. This is a measure of the force required to embed a 0.444-in. steel ball 0.222-in. into the wood. The higher the Janka score, the harder the species.
- **Grain** — Some woods, such as oak and elm have a porous, highly textured grain that you can actually feel. Others, such as cherry and maple, have a closed, tight grain, giving a smooth look and feel.
- **Color** — Some woods have a very light or white grain, others are reddish or brown, some a mix.

About swelling, shrinking, and warping

Wood is a living material that will react to swings of temperature and humidity. To help prevent problems, we provide customers with a Furniture Care Guide that includes recommended humidity and temperature ranges. To minimize potential problems, read and follow our guidelines.

Before you ask to see stain samples

Visit the online interactive wood & stain color chart on our website. Then order sample(s) on the wood(s) of your choice (\$5 per sample)



269-469-5687

www.centeroftheworld.net

Gray Elm

Unique grain, varying from straight to a lively or wooly, almost herringbone-like texture. Depending on your choice of stain, gray elm can really pop with drama — for instance, when stained with Michaels Cherry. Without a stain, elm appears bland, so we don't recommend it.

Janka rating: 830

Brown Maple

Sometimes referred to as soft maple. About 25% softer than select hard maple, it takes a stain better than its harder cousin. A frequent choice of people who want a look similar to stained cherry, but without the higher cost.

Janka rating: 950

Cherry

Particularly beautiful, fine-grained, naturally orange-brown to mahogany. Sap wood (nearer to the bark) is much paler, increasing the wood's character. Cherry darkens as it ages, as a result of exposure to UV rays (think of the patina as cherry's suntan). Therefore, for the first few months of a cherry table's life, we advise customers to avoid leaving anything on top for an extended period, as doing so could result in a light spot. If this happens, however, no worries. Simply remove the item that was blocking the light and the color will soon even out.

Janka rating: 950

Walnut

Stunningly beautiful, fine-grained, chocolate-brown, and relatively lightweight. The finest of hardwoods for furniture. We rarely choose to stain walnut, as the wood is naturally rich with color. Our most expensive wood.

Janka rating: 1010

Red Oak

Often referred to simply as "oak." Highly textured, with a wide, open, flowing grain. Run your hand across a finished red oak table and you can feel the grain. Very porous, so takes stain very well.

Janka rating: 1290

Quarter-Sawn White Oak

Naturally beige. Due to its porous nature, takes stain very well. Very dense, so heavy. Grain has outstanding wavy and ray-flake patterns. Resists rotting and warping, so is highly desirable in areas with high humidity. "Quarter-sawn" means the tree's growth rings are approximately perpendicular to the board's broad face, which is achieved by quartering the log before cutting it into boards. This specialized technique makes it a more expensive wood.

Janka rating: 1360

Select Maple

Also sometimes called "hard maple." Hard, dense, fine-grained, and light-colored. Highly valued for furniture and cutting boards. Extremely tight grain inhibits absorption of stains, so staining is not recommended. Best with a clear varnish, allowing the pristine beauty of the wood to shine. As it ages, will slowly deepen in color, from very pale to soft gold.

Janka rating: 1450

Hickory

Variegated color patterns run the gamut from near-white to dark brown. A stunning wood that requires a skilled eye and hand, as its wild changes in grain direction are extremely difficult to work with. A very hard wood.

Janka rating: 1820.

View wood & stain options at www.PreferredColorList.com

DINING TABLES

	<u>Photo</u>	<u>Price</u>
Alden	1	29
Andrew, Standard	2	27
Andrew, Tile Option	3	27
Andrew with Walnut Inlays	NA	27
Avenue	10	29
Bethel Trestle	4	31
Bethel Leg	5	32
Calais	6	30
Crimmins	7	27
Daniel	8	29
Essex, Tiled	9	27
Hastings	11	27
Hillcrest	12	27
Magda's Table	13	28
Nisbet Trestle	14	28
River Trestle	15	28
Rosebud	16	28
Rosebud for Two	17	28
Live-edge, bookmatched	18	27
Live-edge, hand planed	19	28
Live-edge, wood base	20	28
Taylor	21	28
Valley	22	33

BENCHES

	<u>Photo</u>	<u>Price</u>
Andrew Bench	23	27
Bethel Extendable	24	32
Ganter Bench	25	27
Live-edge w/wood base	20	on request
Live-edge w/steel base	18	on request
Thru-Tenon Bench	26	28

(See more benches in our Dining Chairs catalog)

Alden

I



Available sizes: 42", 48", or 54"

Accommodates up to three 12" leaves

1" thick top

Round top is standard; square top available on request.

269-469-5687 • www.centeroftheworld.net

CENTER of the WORLD
WOOD SHOP
SHOWROOM

Andrew standard

2



Available sizes: 42" x 60", 42" x 66", 42" x 72" 48" x 60", 48" x 66" or 48" x 72"

Can accept up to four 12" leaves

Shown in red oak with Michaels stain

269-469-5687 • www.centeroftheworld.net

CENTER of the WORLD
WOOD SHOP
SHOWROOM

Andrew - Tile Option

3



Available 42x60, 42x66, 42x72, 48x60, 48x66, 48x72
Accommodates up to four 12" leaves
Shown in cherry with Michaels stain



269-469-5687 • www.centeroftheworld.net

CENTER of the WORLD
WOOD SHOP
SHOWROOM

Bethel Trestle

4



Available sizes: 42 x 60, 42 x 66, 42 x 72, 48 x 60, 48 x 66, 48 x 72
Accommodates up to four 12" lvs or two 18" butterfly leaves.
Shown in quarter-sawn white oak with Michaels stain.

269-469-5687 • www.centeroftheworld.net

CENTER of the WORLD
WOOD SHOP
SHOWROOM

Bethel Leg

5



Available sizes: 42 x 60, 42 x 66, 42 x 72, 48 x 60, 48 x 66, 48 x 72
Accommodates up to four 12" leaves or one 18" butterfly leaf.
Shown in quarter-sawn white oak with Michaels stain

269-469-5687 • www.centeroftheworld.net

CENTER of the WORLD
WOOD SHOP
SHOWROOM

Calais

6



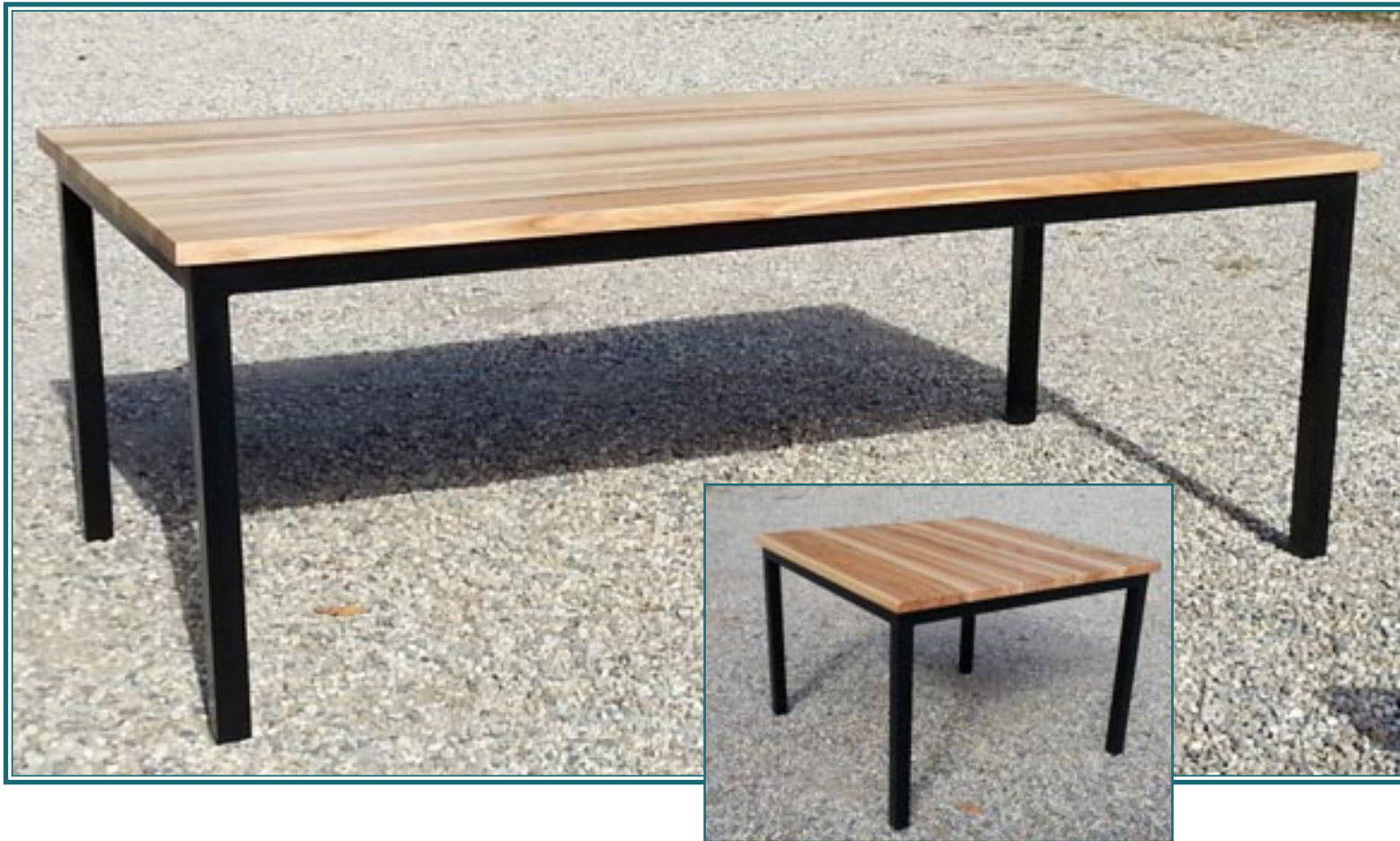
Available sizes: 36 x 42, 36 x 48, 36 x 54, 42 x 42, 42 x 48, 42 x 54
Accommodates up to four 12" leaves
Shown in red oak with Michaels stain

269-469-5687 • www.centeroftheworld.net

CENTER of the WORLD
WOOD SHOP
SHOWROOM

Crimmins

7



Steel base and wood create dramatic contrast
Shown in natural ash with black finish on base

A Terry Hanover design

269-469-5687 • www.centeroftheworld.net

CENTER of the WORLD
WOOD SHOP
SHOWROOM

Daniel — Dining for tiny homes

8



Available sizes:

30" x 42"

33" x 42"

36" x 42"

30" x 48"

33" x 48"

36" x 48"

1" thick solid top

Tapered legs

Lengthwise grain

Shown with Easy Street chairs
and Dustin buffet

[Available in our catalogs]

269-469-5687 • www.centeroftheworld.net

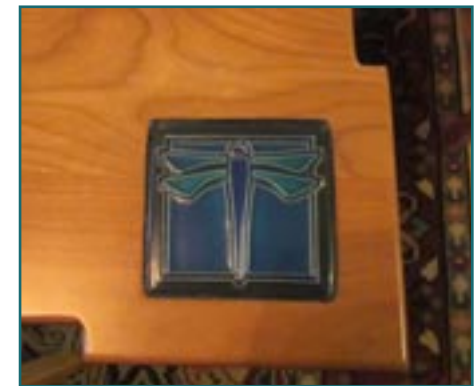
CENTER of the WORLD
WOOD SHOP
SHOWROOM

Essex Tiled

9



Handmade Motawi tiles inlaid
on cutout corners



Available 42x60, 42x66, 42x72, 48x60, 48x66 or 48x72
Shown in natural cherry

A Terry Hanover adaptation

269-469-5687 • www.centeroftheworld.net

CENTER of the WORLD
WOOD SHOP
SHOWROOM

Avenue

10



Available sizes:

42" x 72" or 48" x 72" with up to four 12" leaves

Shown in brown maple with Carbon stain on top, Ebony stain on bottom

269-469-5687 • www.centeroftheworld.net

CENTER of the WORLD
WOOD SHOP
SHOWROOM

Hastings

11



Floating dovetail top available 42x96 or 48x96
Shown in quarter-sawn white oak with Michaels stain

A Terry Hanover design

Shown with Andrews bench, see pg 12



269-469-5687 • www.centeroftheworld.net

CENTER of the WORLD
WOOD SHOP
SHOWROOM



36" x 84" faux plank top with pegged breadboard ends
Shown in cherry with Washington stain

A Terry Hanover design

Magda's Table

13



Available in: 42" x 42", 42" x 48", 48" x 48" or 48" x 54"

Optional: 18" butterfly leaf or two standard 12" leaves

36" tall is standard

Also available at 30" or 42" tall at same cost

269-469-5687 • www.centeroftheworld.net

CENTER of the WORLD
WOOD SHOP
SHOWROOM

Nisbet Trestle

14



41" x 66" plus two 12" leaves
Shown in natural cherry

A Terry Hanover design

269-469-5687 • www.centeroftheworld.net

CENTER of the WORLD
WOOD SHOP
SHOWROOM

River Trestle Table

15



A Terry Hanover design

3/4" thick top, 40" x 94"

Shown in spalted maple with black Ecopoxy® "river"

Thru-tenons and trestle ensure stability

269-469-5687 • www.centeroftheworld.net

CENTER of the WORLD
WOOD SHOP
SHOWROOM

Rosebud

16



Features inlaid stained glass and walnut rosebuds.

Shown in natural cherry
42 x 48 x 30 with two 12" leaves

Shown with Rosebud chair

A Terry Hanover design

269-469-5687 • www.centeroftheworld.net

CENTER of the WORLD
WOOD SHOP
SHOWROOM

Rosebud for Two

17



Walnut reverse-bevel top, 44 x 24 x 30
Cherry base, painted
Inlaid glass rosebud

A Terry Hanover design

269-469-5687 • www.centeroftheworld.net

CENTER of the WORLD
WOOD SHOP
SHOWROOM

Live-edge bookmatched walnut, steel base

18



1 3/4"- thick, book matched, live edge top, 45" x 95"
Steel base with gunmetal finish
Shown in natural walnut

A Terry Hanover design



269-469-5687 • www.centeroftheworld.net

CENTER of the WORLD
WOOD SHOP
SHOWROOM

Live-edge hand-planed cherry, steel base

19



A Terry Hanover design

2" thick top is hand-planed, rough-sawn, live-edge, 40" x 80"
Steel base with powdered black finish
Shown in natural cherry

269-469-5687 • www.centeroftheworld.net

CENTER of the WORLD
WOOD SHOP
SHOWROOM

Live-edge, wood base

20



Available sizes: varies depending on wood availability
Bench also available

269-469-5687 • www.centeroftheworld.net

CENTER of the WORLD
WOOD SHOP
SHOWROOM

Taylor

21



A Terry Hanover design



48" round plus two 12" leaves
Massive pedestal ensure stability
Shown in quarter-sawn white oak with Michaels stain

269-469-5687 • www.centeroftheworld.net

CENTER of the WORLD
WOOD SHOP
SHOWROOM



Available sizes: 42 x 60, 42 x 66, 42 x 72, 48 x 60, 48 x 66, 48 x 72

Can accept up to four 12" leaves or two 18" butterfly leaves

Shown in brown maple with Michaels stain

269-469-5687 • www.centeroftheworld.net

CENTER of the WORLD
WOOD SHOP
SHOWROOM

Andrew Bench

23



Trestle ensures integrity of stability
Legs taper from wide at bottom to narrow at top
Shown in quarter-sawn white oak with Michaels stain

A Terry Hanover design

269-469-5687 • www.centeroftheworld.net

CENTER of the WORLD
WOOD SHOP
SHOWROOM

Bethel Extendable Bench

24



Available lengths: 48", 60", 72"

Can accept up to four 12" leaves

Includes leaf storage box for up to four leaves

Shown in quarter-sawn white oak with Michaels stain

269-469-5687 • www.centeroftheworld.net

CENTER of the WORLD
WOOD SHOP
SHOWROOM

Ganter Bench

25



Thru-tenons ensure integrity of stability
Shown in quarter-sawn white oak with Asbury stain
24" long
Other lengths quoted on request

A Terry Hanover design

269-469-5687 • www.centeroftheworld.net

CENTER ^{of the} WORLD
WOOD SHOP
SHOWROOM

Thru-Tenon Bench

26



Thru-tenon ensures integrity of stability.
Shown in spalted maple, 95" long (above) and 45" long (lower right)

A Terry Hanover design



269-469-5687 • www.centeroftheworld.net

CENTER of the WORLD
WOOD SHOP
SHOWROOM